

TRIBUNAL
CHATEAULIN

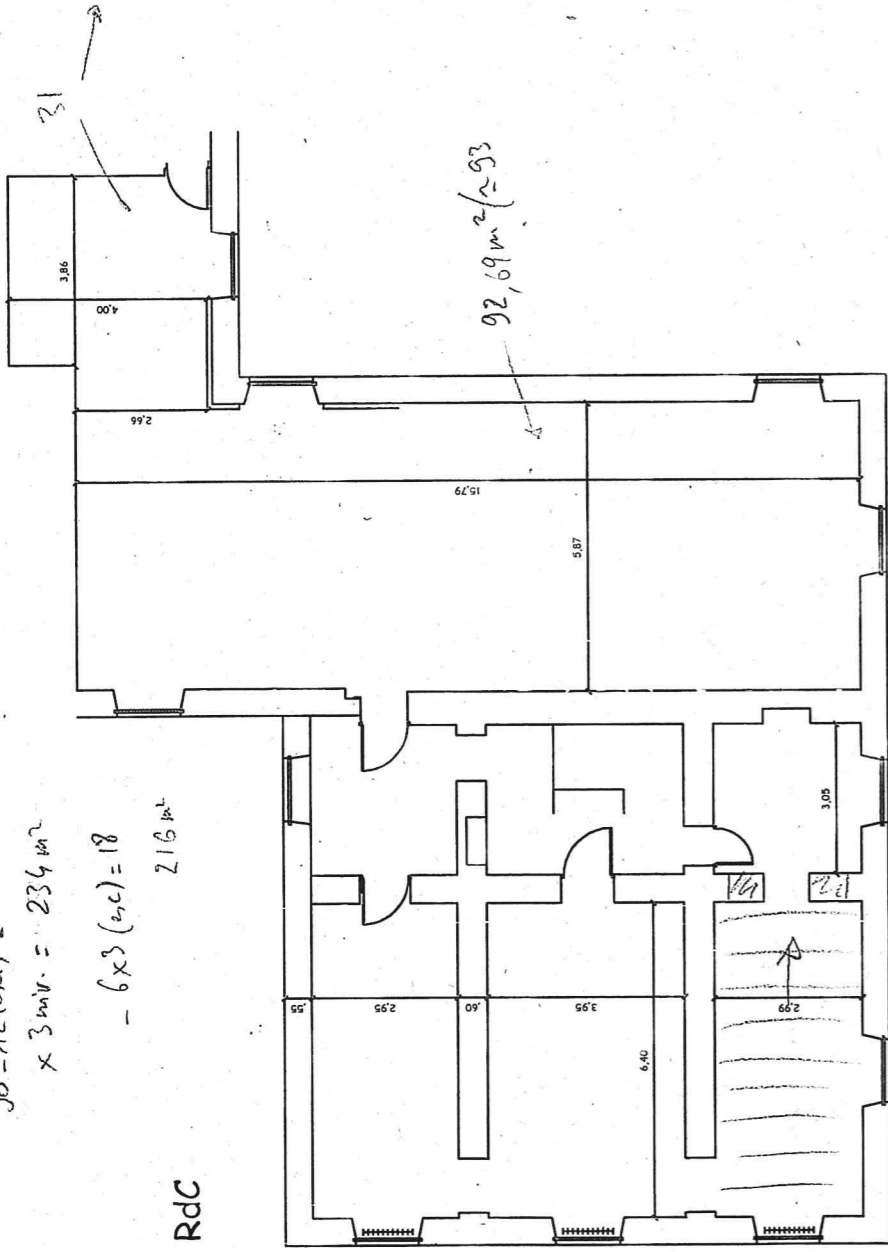
no 255

sur MAS

surface sur talon d'arrêt :

- IEN = 110m²
 - ex-tbn = 244m²
- 354m²

90-12 (occ.) = 78
x 3 m.v. = 234 m²
- 6 x 3 (acc) = 18
216 m²



ndc 93
JR 93
ndc 31
JR 31
248 m²

216
248
464 m²
+ WC ext.
+ garage
9

